



adin|at a glance

Your dental implant partner



Expertise

Reward

Recognition

adin | stands for

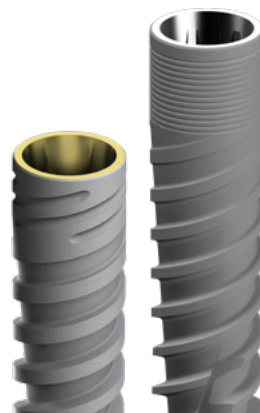
When you're seeking to minimize micro movements between the dental implant and the abutment and to reduce potential bone loss, you'll benefit from Adin's CloseFit™ (UNP/NP/RP/WP) spiral implant system, which features an extremely strong, stable and solid conical-hex connection.

CloseFit™ Narrow (NP™) & Ultra Narrow (UNP™) implants

With more than 10 years of proven clinical experience, these uniquely designed small diameter implants of 2.75mm & 3.0mm, have an especially narrow body & collar to provide a perfect solution that addresses narrow ridges in atrophic jaws for exceptional esthetic's results.

Advantages:

- High primary stability, even in Type IV bone
- Self-tapping
- Double lead threads (2 x 1.2mm)
- Redirecting capability for more accurate implant placement
- Built-in platform switching and a strong CloseFit™ connection
- Requires minimally invasive surgery
- Immediate function / loading capability in all bone types



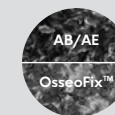
Double Lead Thread allows for easy self-tapping insertion of the implant



Built in Platform Switching Our prosthetic parts feature a narrower neck compared to implant diameter to prevent crestal bone loss



Redirecting Capabilities for optimal placement during surgery



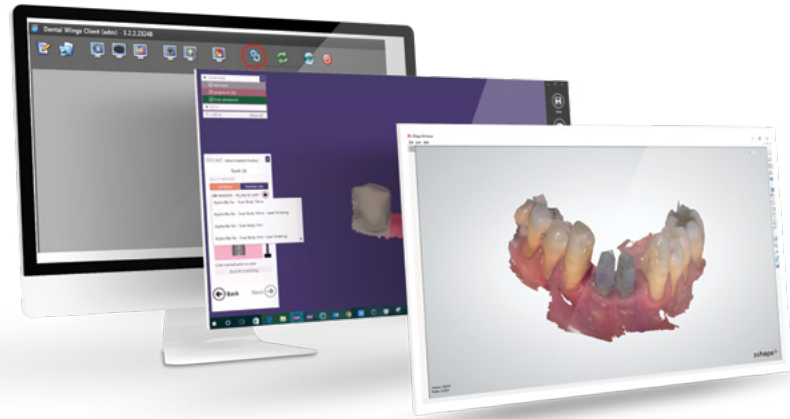
Superior Surface Treatment Our implants are surface treated with AB/AE (Alumina Blasting/Acid Etched) or OsseoFix™ - biocompatible surface treatment that uses gritting with calcium phosphate media that is debris free and has been designed to achieve the desired roughness levels needed for optimal osseointegration

One Connection – All Touareg™ diameters and restorative parts connect with one unified Internal Hex Connection to simplify management of surgical & prosthetic procedures.

Made for simple & streamlined use featuring a high stability mechanism & unique surface treatment with an Internal Hex connection.

Stability – Our Touareg™ implant features an active & dynamic self-drilling threads, engineered to provide Ideal primary stability and immediate loading capabilities in all bone types. Designed for confidence & predictable procedures.





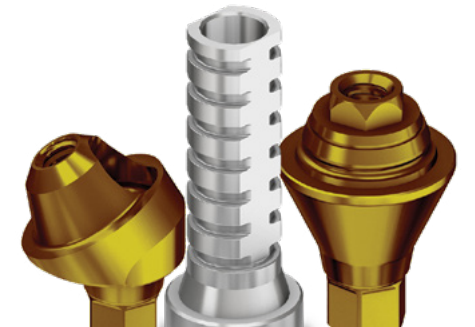
- Scan Body
- Digital Analog
- Ti Bases
- TMA Cylinder & Cementing Cone
- Digital Libraries

Adin's CAD - CAM components and digital libraries enable dental clinicians and technicians to design and manufacture state-of-the-art restorations supported by Adin's implants, using current and up-to-date digital restoration processes.

The variety of components ensure endless restorative options for treatment of single, multiple, partially, or full edentulous cases.

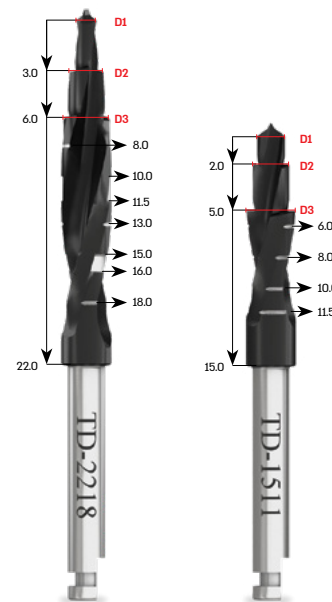
Adin portfolio includes all components needed to support restorations on implant level, multi-unit level, cement retained and screw retained restorations, from single unit to full arch restoration, for temporary and permanent rehabilitation.

Our components gives a full CAD CAM solution for digital work flow, and are available in CAD software.



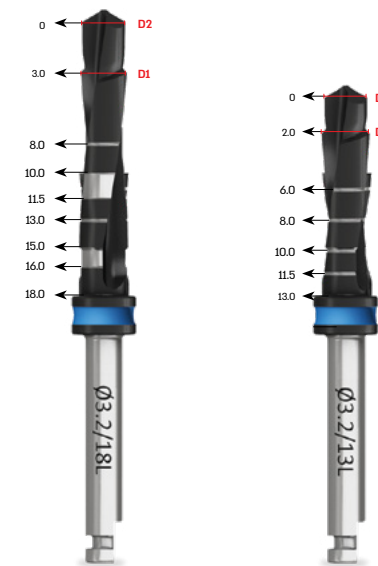
Take your practice to the next level

- **Intuitive and Easy Use** - our tool and placement kits are planned with you in mind- just choose your implant diameter and length and follow the drill sequence in the kit
- **As Long as You Need** - adinguide™ kit can support the use of implants as long as 18mm and as short as 6mm



Advanced Three Step Drill Design:
a new drilling experience

- Unique design and sharpness for minimal invasiveness and increased apex implant stability
- Integrated counter bore function for a simplified cutting process
- Reduced overall drill usage and replacement for maximum cost-effectiveness





adin|at a glance

Every business starts with a vision. Ours is simple:
We want to create the best possible dental implant solutions that offer uncompromising quality at an affordable price. It's our people that help our business thrive and grow. That's why we place so much importance on building strong personal relationships that enable us to meet our doctors' and distributors' needs. Understanding that their success is our success, we're focused on providing professional, high quality and affordable solutions and exceptional service that helps them grow.



560 Sylvan Avenue | Suite 3160 | Englewood Cliffs, NJ 07632
e: contactusa@adin-implants.com | t: 201-374-2592 | www.adin-implants.com